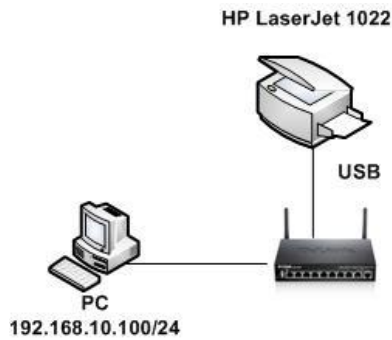


## How to use and setup USB printer with DSR model on Windows 7 system



Printer support list can be referred to at <http://www.openprinting.org/printers>

[Setup DSR-250N]

1. Power on DSR-250N.
2. Wait to the WEB GUI can make us login then connect the USB printer.
3. Setup > USB Settings > USB Status


Make sure the printer is work and remember the “**Device Model**”.

**USB SETTINGS** LOGOUT

This page displays information about the USB devices connected to the USB port(s). This page also allows user to do certain configurations on USB devices, such as safely unmounting the devices.

---

**USB-1: Printer Device Settings**



<b>Device Vendor:</b>	Hewlett-Packard
<b>Device Model:</b>	HP_LaserJet_1022
<b>Device Type:</b>	Printer
<b>Mount Status:</b>	Mounted

4. Setup > USB Settings > USB Share port

USB (Printer): **Enable USB Printer**

Sharing Enabled interfaces: **Enable Printer (default)**

Operation succeeded

**USB SHARE PORT** LOGOUT

This page allows the user to configure the SharePort feature available in the router.

---

**USB (Printer)**

**Enable USB Printer:**

**Enable sharing:**

---

**Sharing Enabled interfaces**

VLAN Name	Enable Printer	Enable Storage
default	<input checked="" type="checkbox"/>	<input type="checkbox"/>

You can check “More” in this page.

The USB printer can be accessed on any LAN host (**with appropriate printer driver installed**) connected to the router by using the following command in the host's add printers window

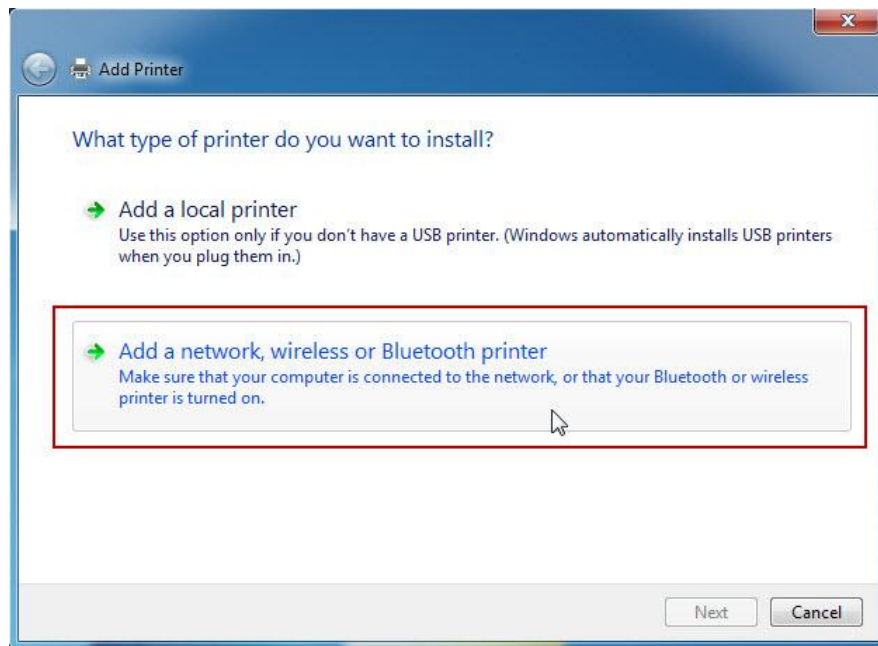
**<http://<Router's IP:631>/printers/<Device Model>>**

(Device Model can be found in the USB settings page).

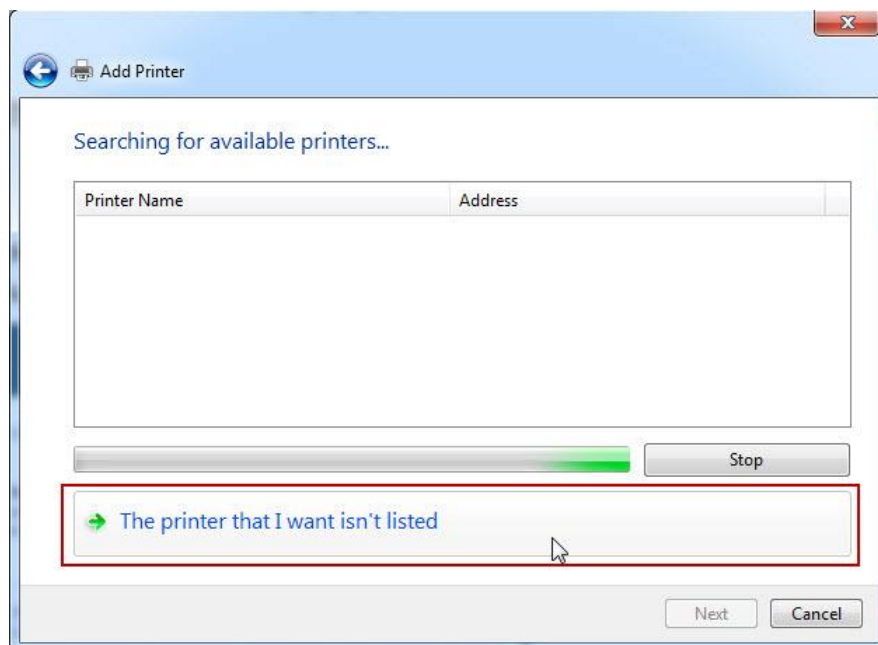
## [Setup Windows 7]

### 1. Control Panel \ Hardware and Sound \ Add a printer

Click “Add a network, wireless or Bluetooth printer” and next

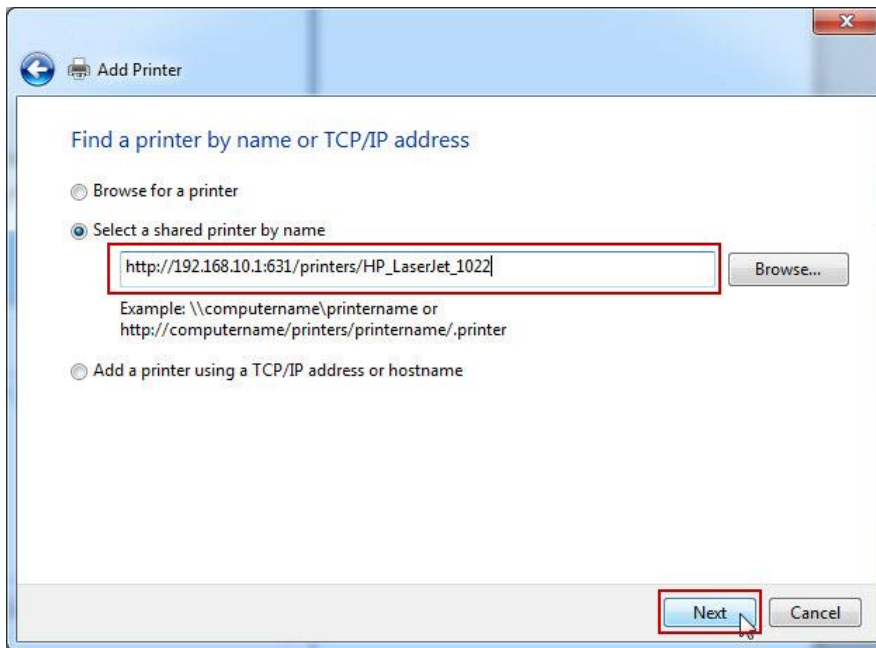


### 2. Click “The printer that I want isn't listed”

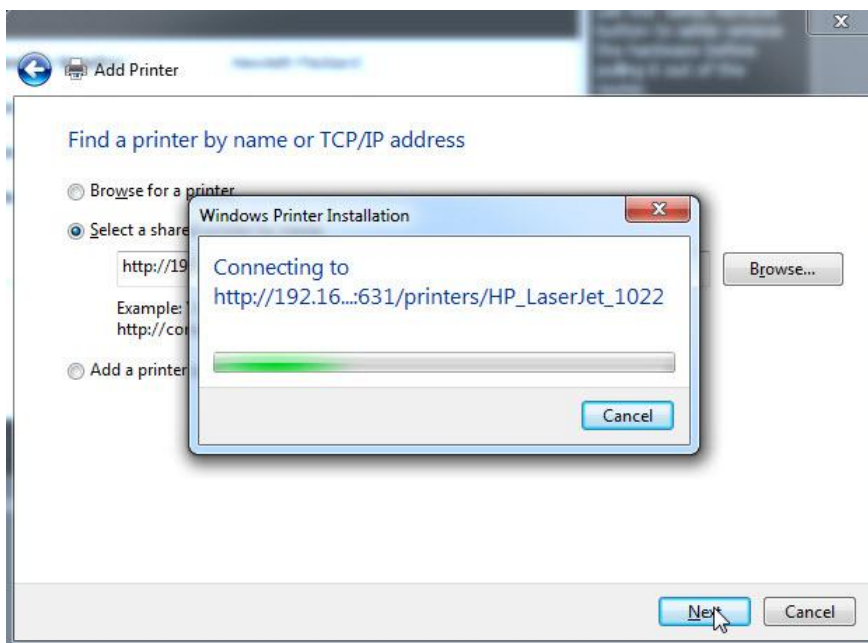


3. Type in your device information.

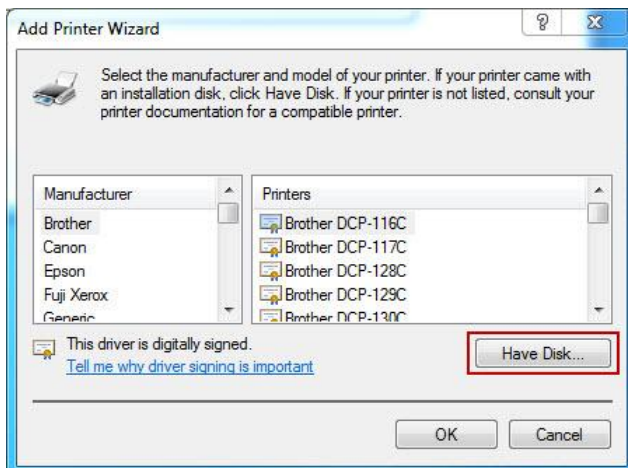
[http://192.168.10.1:631/printers/HP\\_LaserJet\\_1022](http://192.168.10.1:631/printers/HP_LaserJet_1022)



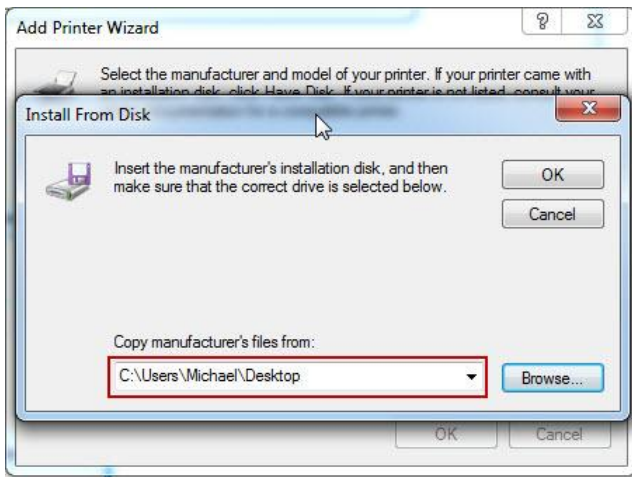
Click "Next"



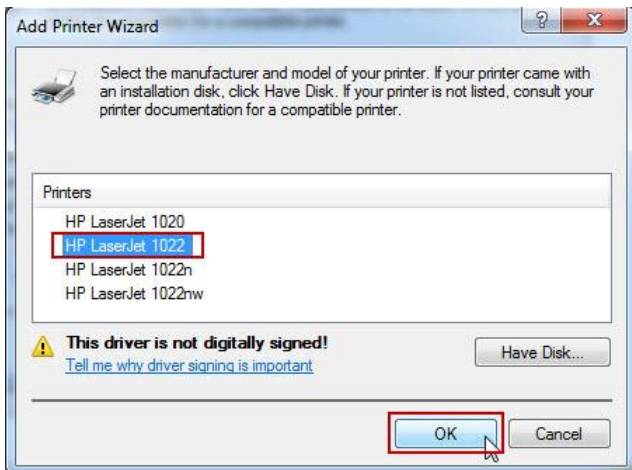
System will scan some time then will see "Add Printer Wizard"



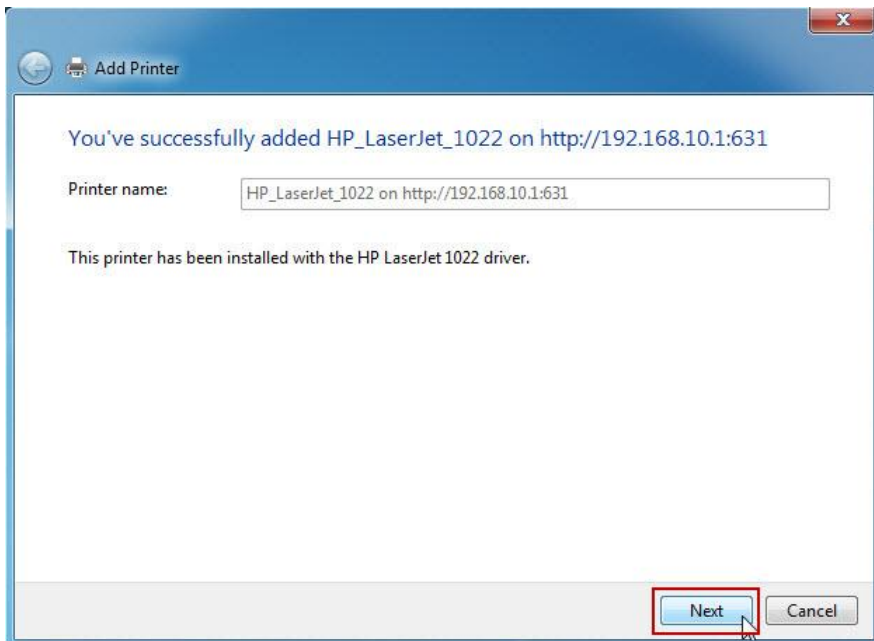
Click "Have Disk" then choose your printer driver.



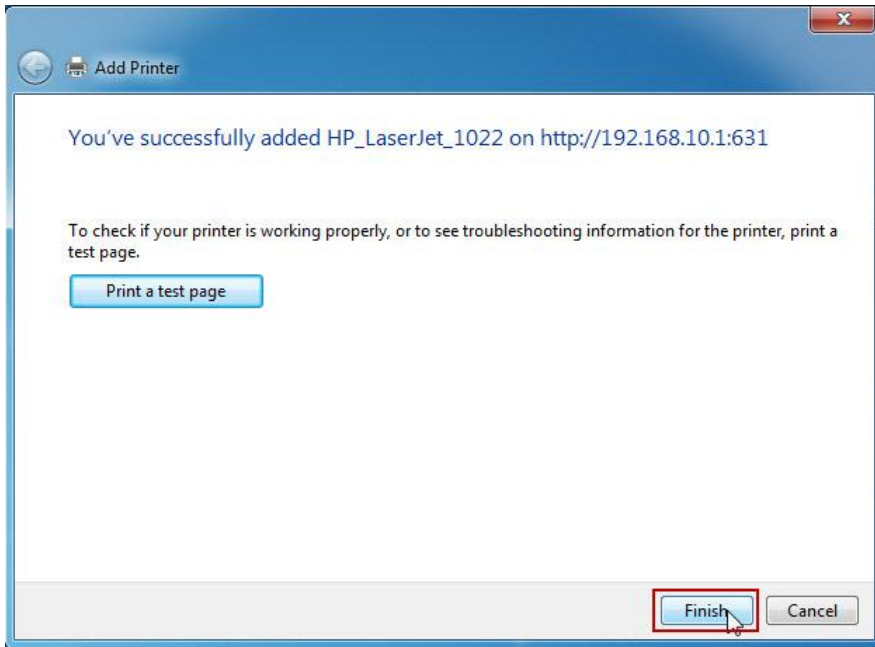
Click "OK"



When we click "OK" it will see the successfully page.



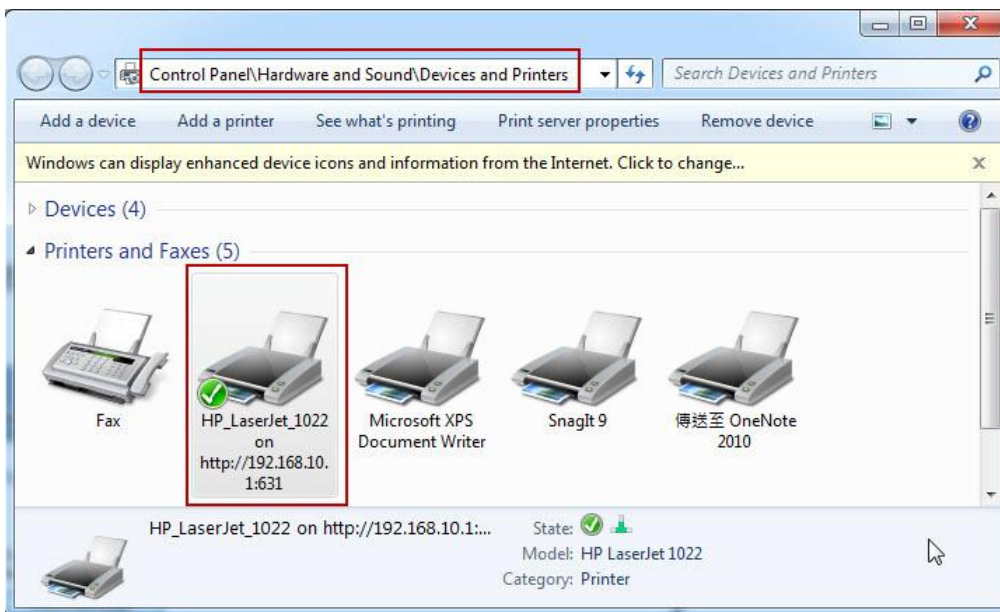
Click "Next"



Finally we are doing all of setup.

You can use “**Control Panel**” to check your printer device.

**Control Panel \ Hardware and Sound \ Devices and Printers**



END